



**Commonwealth of Kentucky  
Stakeholder Advisory Forum**  
August 2, 2018

# Stakeholder Advisory Forum Agenda

---

<b>Topic</b>	<b>Content</b>
<b>Opening/Welcome</b>	<ul style="list-style-type: none"><li>• Overview of the Stakeholder Advisory Forum</li></ul>
<b>Updates from Commonwealth</b>	<ul style="list-style-type: none"><li>• Legal Decision Timeline</li><li>• Status of Kentucky HEALTH Implementation</li><li>• Stakeholder Group Impacts</li><li>• Recommended Next Steps for Beneficiaries</li><li>• Courses Available on Citizen Connect</li><li>• Frequently Asked Questions</li></ul>
<b>Available Resources</b>	<ul style="list-style-type: none"><li>• Kentucky HEALTH Website</li><li>• Kentucky HEALTH Social Media: Facebook and Twitter</li></ul>
<b>Kentucky HEALTH Overview</b>	<ul style="list-style-type: none"><li>• Kentucky HEALTH Covered Populations</li><li>• Kentucky HEALTH Overview</li><li>• PATH Community Engagement Information</li></ul>
<b>Q&amp;A</b>	<ul style="list-style-type: none"><li>• Take questions from participants</li></ul>
<b>Closing</b>	<ul style="list-style-type: none"><li>• N/A</li></ul>

---

# Opening/Welcome

# Stakeholder Advisory Forums

## What



Stakeholder Advisory Forums are set-up to help with the Medicaid transformation. These forums will include:

- updates on implementation activities
- live system demonstrations
- overviews of draft communications
- responses to questions about operationalizing specific policies
- notice of upcoming communications from the Commonwealth to beneficiaries
- topics brought forth by forum participants

## Why



Provide an avenue for constructive feedback and solutions to help ensure a successful transition for eligible Medicaid beneficiaries

## How



Moving forward, contact [KYHealthTeam@KY.gov](mailto:KYHealthTeam@KY.gov) to be included on future communications regarding these meetings

# Stakeholder Advisory Forums

## When



March 8<sup>th</sup>  
1:00 PM EST



KY Transportation Cabinet Auditorium  
200 Metro St, Frankfort, KY 40601



April 5<sup>th</sup>  
1:00 PM EST



Kentucky Career Center  
600 West Cedar St. Room 111, Louisville, KY 40202



May 3<sup>rd</sup>  
1:00 PM EST



KY Transportation Cabinet Auditorium  
200 Metro St, Frankfort, KY 40601



June 7<sup>th</sup>  
1:00 PM EST



Covington - Radisson Hotel  
668 W 5<sup>th</sup> Street, Covington, KY 41011



July 12<sup>th</sup>  
1:00 PM EST

**POSTPONED**



Ashland Community & Technical College  
LRC Building Room L275, Ashland, KY 41101



August 2<sup>nd</sup>  
1:00 PM CST



Green River ADD  
300 Gradd Way, Owensboro, KY 42301



September 6<sup>th</sup>  
1:00 PM EST



KY Transportation Cabinet Auditorium  
200 Metro St, Frankfort, KY 40601



October 4<sup>th</sup>  
1:00 PM EST



Center for Rural Dev. Ballroom  
2292 US-27 #300, Somerset, KY 42501



November 1<sup>st</sup>  
1:00 PM EST



KY Transportation Cabinet Auditorium  
200 Metro St, Frankfort, KY 40601



December 6<sup>th</sup>  
1:00 PM EST



KY Transportation Cabinet Auditorium  
200 Metro St, Frankfort, KY 40601

# Updates from the Commonwealth

## Legal Decision Timeline

**6/29:** Judge issues legal ruling on Kentucky HEALTH, removing original approval and delaying program's start



**HHS/CMS re-evaluate Kentucky HEALTH waiver**

**6/30:** Per the State Plan Amendment, dental, vision, and non-emergency medical transportation benefits are suspended for adults in the Alternative Benefit Plan

**7/1:** Original planned start date of Kentucky HEALTH; discussions with CMS ongoing to determine delay status.

**7/19:** Dental, vision, and non-emergency medical transportation are restored retroactive to 7/1/18 for adults in the Alternative Benefit Plan

## July

1. Changes to Medicaid under Kentucky HEALTH **did not** begin on July 1, 2018 as planned.
2. The Secretary of HHS and Centers for Medicare and Medicaid Services (CMS) begin process of **re-evaluating the Kentucky HEALTH waiver**.
3. CMS notified the Cabinet that it would pursue a **30-day federal comment period**.

## Next Steps

Based on recent conversations with CMS, we are **confident** that we have a path forward for **implementing Kentucky HEALTH**.

CHFS will work with CMS as requested to address comments received during the 30-day federal comment period.



## Stakeholder Group Impacts

Stakeholder Group	Implications
<b>Beneficiaries</b>	<ul style="list-style-type: none"> <li>• No change to benefits</li> <li>• Can continue to earn My Rewards – through online courses, accessing preventive care, AND completing approved activities</li> </ul>
<b>Kentucky HEALTH Project Team</b>	Collaborate with CMS, HHS, and DOJ to work toward re-approval of the Kentucky HEALTH waiver
<b>Managed Care Organizations</b>	Provide process for premium reimbursements
<b>Community partners</b> (e.g., Foundation for a Healthy Kentucky, advocacy groups, CBOs, businesses)	Continue to add PATH Community Engagement activities to Business Connect and FOCUS and work with Kentucky Career Centers (KCCs)
<b>Department for Community Based Services and Department for Medicaid Services</b>	Answer questions from beneficiaries and prepare for future Kentucky HEALTH roll-out
<b>Workforce Boards/ Kentucky Career Centers</b>	Continue to add PATH Community Engagement activities to Business Connect

## Recommended Next Steps for Beneficiaries

### Update Information

- Visit [benefind.ky.gov](https://benefind.ky.gov) to make sure your contact information is up-to-date.

### Get Ready for PATH Community Engagement

- Find your local Kentucky Career Center by visiting [KCC.ky.gov](https://KCC.ky.gov).
- Visit [KentuckyHEALTH.ky.gov](https://KentuckyHEALTH.ky.gov) to plan how you might complete the PATH Community Engagement requirement when it starts in your area.

### Earn My Rewards

- Take online courses at [CitizenConnect.ky.gov](https://CitizenConnect.ky.gov)
- Access preventive care
- Complete approved activities
- Use dollars earned when Kentucky HEALTH starts

# Courses Available on Citizen Connect

---

## Courses on Citizen Connect

- Kentucky HEALTH Overview
- Kentucky HEALTH My Rewards Overview (& Spanish version)
- Kentucky HEALTH Deductible Account (& Spanish version)
- Kentucky HEALTH Cost Sharing (& Spanish version)
- Kentucky HEALTH PATH Community Engagement
- Kentucky HEALTH Substance Abuse Disorder Course
- Kentucky HEALTH Notice of Eligibility course
- Anthem course – Basics of Nutrition (& Spanish version)
- Humana course – Building Your Resume Part 1
- Humana course – Building Your Resume Part 2
- WellCare – Personal Finance 101
- Passport – Wellness for LIFE
- Kentucky HEALTH Overview – Spanish version
- Kentucky HEALTH PATH Community Engagement – Spanish version
- Kentucky HEALTH Substance Abuse Disorder Course
- Kentucky HEALTH Notice of Eligibility course

---

**[CitizenConnect.ky.gov](https://CitizenConnect.ky.gov)**

# Frequently Asked Questions about Legal Decision

## **What does this court ruling mean for beneficiaries?**

- As of July 1, 2018, beneficiaries' medical benefits will continue as they were prior to July 1, 2018 with no change.

## **What do beneficiaries need to do?**

- Beneficiaries are **not** required to do anything at this time.
- Beneficiaries and their eligible family members can continue to access medically necessary and preventive healthcare services, as well as vision, dental, and non-emergency medical transportation.

## **What happens if a beneficiary already paid his/her premium for July?**

- If you already paid a premium, you can either ask for it to be used to pay the next premium when it becomes due, or you can ask for a refund.
- You should contact your MCO to discuss your options. If you ask for a refund, your MCO will send by 30 days after your request.

## Do I have a PATH Community Engagement requirement?

- If you received a notice dated July 1, 2018 saying you may have a community engagement requirement, you do **not** need to do anything right now.
- There currently is **no PATH Community Engagement requirement** in any part of the Commonwealth.
- While the program has been temporarily stopped, **you should not ignore the notice**. If/when community engagement goes into effect, we want everyone to be ready for the Kentucky HEALTH program, and to know what you need to do to continue getting Medicaid benefits through Kentucky HEALTH.

## Co-payments Update

### Do I need to pay a co-payment for health care services/visits?

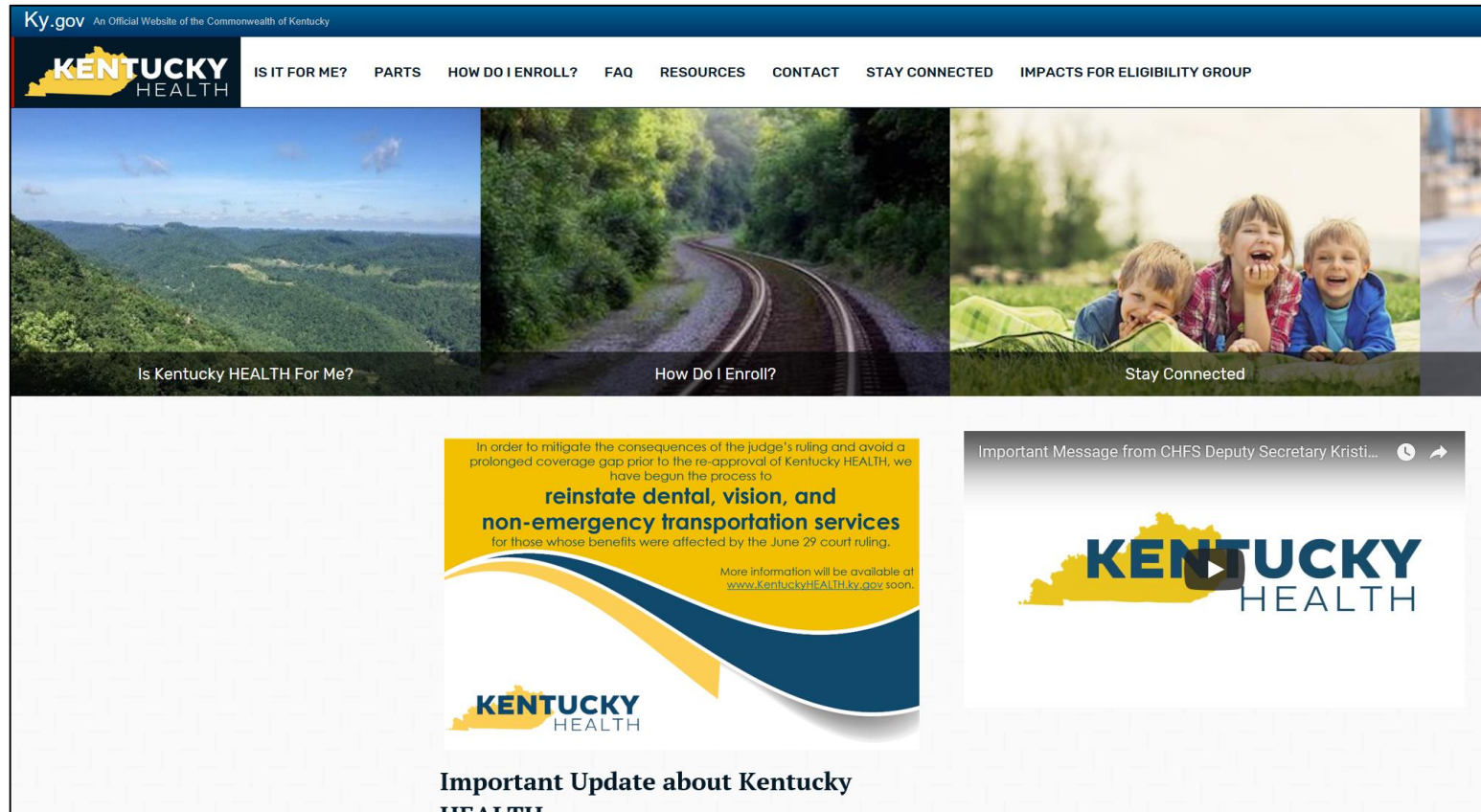
- As of July 1, 2018, Medicaid asked MCOs to begin collecting co-payments for services.
- Because not all MCOs were collecting co-payments in the same way, Medicaid decided to **temporarily delay co-payment requirements**.
- If you will have co-payments for health care services/visits in the future, you will **receive a notice from your MCO soon**.
- Medicaid is **not** requiring MCOs to collect co-payments at this time.

# Available Resources

# Kentucky HEALTH Website Updates

The Kentucky HEALTH website and social media pages have been updated regularly with information about how the legal ruling has affected beneficiaries, providers, and stakeholders.

## Kentucky HEALTH Website: [www.KentuckyHEALTH.ky.gov](http://www.KentuckyHEALTH.ky.gov)





## Follow Kentucky HEALTH on Social Media

The Kentucky HEALTH website and social media pages have been updated regularly with information about how the legal ruling has affected beneficiaries, providers, and stakeholders.



Facebook: **@KentuckyHEALTH**



Twitter: **@KentuckyHEALTH1**

# Kentucky HEALTH Overview

# Kentucky HEALTH Covered Populations



## Medicaid Populations NOT included in Kentucky HEALTH

*Traditional Medicaid (Aged, Blind & Disabled)*

Home and Community Based Waiver - 1915(c)  No Change	Model Waiver II – 1915(c)  No Change
Michelle P Waiver – 1915(c)  No Change	Supports for Community Living – 1915(c)  No Change
Acquired Brain Injury – 1915(c)  No Change	Acquired Brain Injury, Long Term Care – 1915(c)  No Change
Nursing Facility and ICF/MR Residents  No Change	Qualified Medicare Beneficiaries  No Change

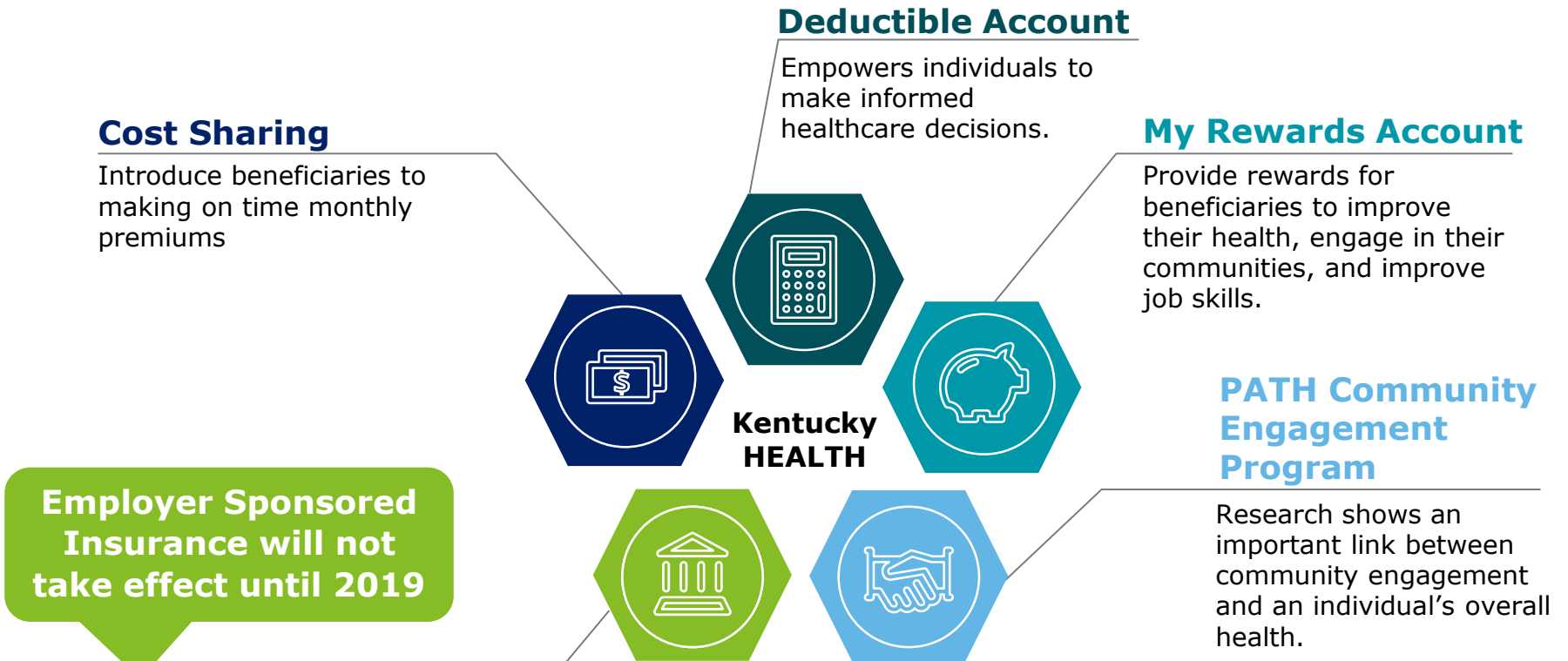
## Medicaid Populations INCLUDED in Kentucky HEALTH

**Non-Disabled Adults & Children**  
*(Individuals covered before expansion, pregnant women, children, former foster youth up to age 26 & adult expansion population)*

<b>Income-Eligible Parents/Guardians</b> <ul style="list-style-type: none"> <li>• Premiums or Copays</li> <li>• No Change in Benefits (continue to get vision and dental through MCO)</li> <li>• Community Engagement required, unless primary caretaker of dependent</li> </ul>	<b>Income-Eligible Adults</b> <ul style="list-style-type: none"> <li>• Premiums or Copays</li> <li>• Vision and Dental available through My Rewards Account</li> <li>• Community Engagement required, unless primary caretaker of dependent</li> </ul>
<b>Pregnant Women &amp; Children (Traditional Medicaid and KCHIP)</b> <ul style="list-style-type: none"> <li>• No Premiums</li> <li>• No Change in Benefits</li> <li>• Community Engagement initiative not required</li> </ul>	<b>Medically Frail Adults &amp; Former Foster Youth up to age 26</b> <ul style="list-style-type: none"> <li>• Optional Premiums (for access to My Rewards)</li> <li>• No Change in Benefits</li> <li>• Community Engagement initiative not required</li> </ul>

# What is the Kentucky HEALTH Program?

Kentucky HEALTH is broken down into several different components, detailed below:



**Employer Sponsored Insurance will not take effect until 2019**

## Employer Sponsored Insurance

A path for the Commonwealth to pay beneficiary's premium if employer sponsored insurance is available.

**FYI**

More information on these key components of the Kentucky HEALTH program can be found online at ***KentuckyHEALTH.ky.gov.***

# Kentucky HEALTH Eligibility



Categories of Eligibility					
Children	Pregnant Women	Former Foster Youth (up to age 26)	Medically Frail	Income-Eligible Caretaker of a Child	Income-Eligible Adults

\*If paying premiums

Parts of Kentucky HEALTH	State Plan (benefits)	✓	✓	✓	✓	✓	Alternative Benefit Plan	
	My Rewards Account (MRA)		✓	✓ *	✓ *	✓ *	✓ *	
	Deductible Account		Yes, but inactive until 60 days postpartum	✓	✓	✓	✓	✓
	Cost Sharing: Premiums			Optional (gives access to MRA)	Optional (gives access to MRA)	✓	✓	✓
	PATH Community Engagement					✓	✓	✓
	Premium Assistance (does not start until 2019)		Optional	Optional	Optional	✓	✓	✓

# Benefit Type by Population

## Kentucky HEALTH Alternative Benefit Plan

- Benefits and limitations similar to the Kentucky State Plan
- Non-medical vision/dental services covered through Kentucky HEALTH My Rewards Account

## Kentucky HEALTH Medicaid State Plan/CHIP

- No change in benefits
- All vision/dental services covered by **MCOs**

Population	Benefit Package
Income-Eligible Adults	● Kentucky HEALTH Alternative Benefit Plan
Medically Frail Adults	● Medicaid State Plan (No change in benefits)
Former Foster Youth to age 26	● Medicaid State Plan (No change in benefits)
Income-Eligible Parents/Guardians & Transitional Medical Assistance (TMA)	● Medicaid State Plan (No change in benefits)
Pregnant Women	● Medicaid State Plan (No change in benefits)
Children	Medicaid State Plan (No change in benefits)

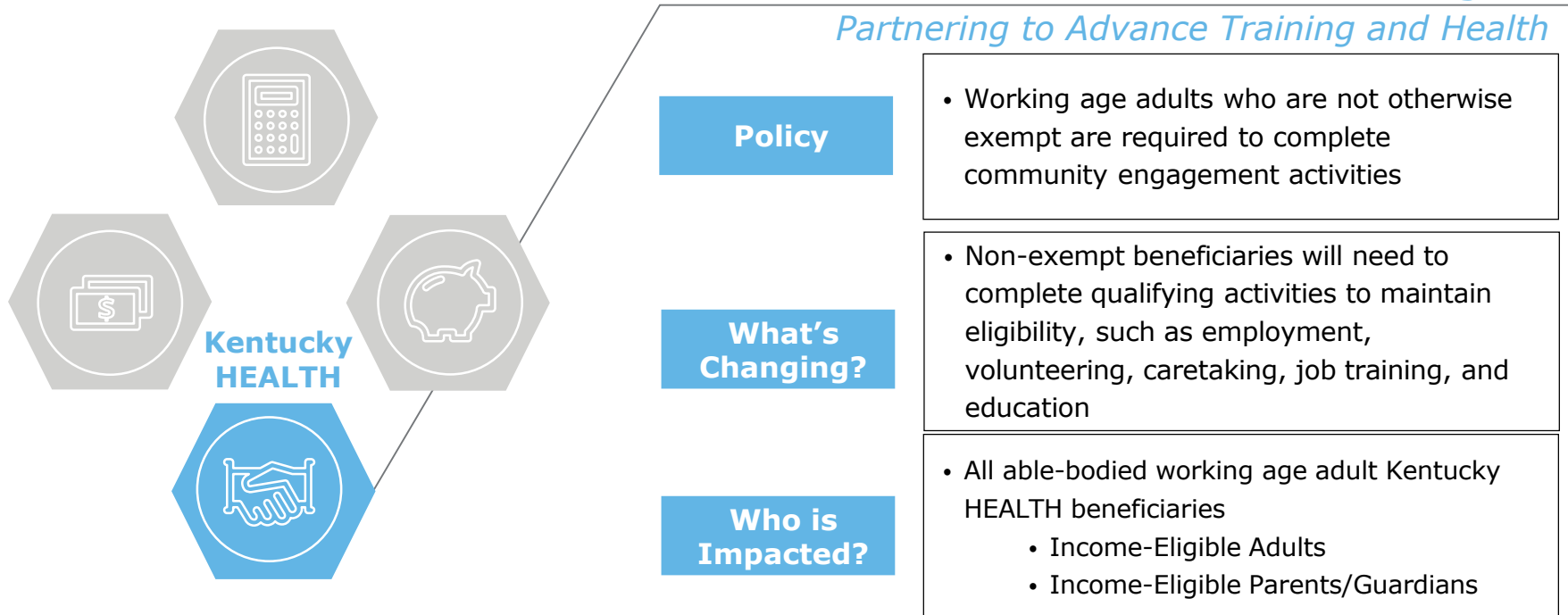
**Note:** Someone is considered a parent/caretaker until a dependent child is age 18.

# Community Engagement Initiative

Research shows an important link between some sort of community engagement and an individual's overall health and well-being. The PATH program is a community engagement initiative for Kentucky HEALTH beneficiaries designed to better individual health outcomes.

## PATH Program

### Partnering to Advance Training and Health



#### Policy

- Working age adults who are not otherwise exempt are required to complete community engagement activities

#### What's Changing?

- Non-exempt beneficiaries will need to complete qualifying activities to maintain eligibility, such as employment, volunteering, caretaking, job training, and education

#### Who is Impacted?

- All able-bodied working age adult Kentucky HEALTH beneficiaries
  - Income-Eligible Adults
  - Income-Eligible Parents/Guardians

#### Not Impacted

- Children
- Pregnant Women
- Medically Frail & Former Foster Youth up to Age 26
- Chronically Homeless
- Primary Caregiver of a Dependent
- Full-time Students

#### Fulfill PATH Requirement

- Full-time Employed
- If a beneficiary is receiving SNAP or KTAP benefits, the SNAP or KTAP work program and applicable exemptions apply instead of PATH

## PATH Program:

Partnering to Advance Training and Health

# Overview: Creating an Individualized PATH

Partnering to **A**dvance **T**raining and **H**ealth

- Some adults on Medicaid will need to participate in **80 hours of Community Engagement activities each month** to keep their medical benefits.
- Individuals can **choose community engagement activities based on their goals and skills.**
- Kentucky HEALTH **is working with Kentucky Career Centers and adult education agencies across the Commonwealth.**





# Who is Included in PATH Community Engagement?

## Included

Working age adults who:

- Do not have a disability
- Are not the primary caregiver for a child or children
- Are not exempt for another reason

## Not Included

- Children
- Pregnant Women
- Medically frail individuals
- People who are chronically homeless
- People who are taking care of their child or children
- Full-time students
- Former Foster Youth up to age 26

### **Some people are already meeting the Community Engagement requirement, including:**

- People who are already employed full-time (30 hours per week or more)
- Individuals who are in SNAP or TANF employment & training programs

# Ways to participate in PATH Community Engagement

Below are some examples of activities a Kentucky HEALTH recipient could participate in to earn hours towards their PATH Community Engagement requirement.

## Qualifying PATH Activities

- **Job Skills Training**
- **Kentucky Career Center (KCC) Skills/Goals Assessment**
- **Job Search Activities**
- **GED Programs**
- **Employment**
- **Apprenticeships/Internships**
- **Community Service/Volunteering**
- **Caregiving Services**
- **Participation in Substance Use Disorder Treatment**

# Questions & Answers

**Thank you!**