



Commonwealth of Kentucky
Stakeholder Advisory Forum
September 6, 2018

Stakeholder Advisory Forum Agenda

Topic	Content
Opening/Welcome	<ul style="list-style-type: none">• Overview of the Stakeholder Advisory Forum
Updates from Commonwealth	<ul style="list-style-type: none">• Legal Decision Timeline• Frequently Asked Questions• Next Steps for Implementation• Misconceptions and Clarifications• Stakeholder Group Impacts• Recommended Next Steps for Beneficiaries
Business Connect and Organizational Examples	<ul style="list-style-type: none">• Business Connect Overview
Available Resources	<ul style="list-style-type: none">• Kentucky HEALTH Website• Kentucky HEALTH Pulse Newsletter• Kentucky HEALTH Social Media: Facebook and Twitter
Kentucky HEALTH Overview	<ul style="list-style-type: none">• Kentucky HEALTH Covered Populations• Kentucky HEALTH Overview• PATH Community Engagement Information
Q&A	<ul style="list-style-type: none">• Live Questions and Answers

Opening/Welcome

Stakeholder Advisory Forums

What



Stakeholder Advisory Forums are set-up to help with the Medicaid transformation. These forums will include:

- updates on implementation activities
- live system demonstrations
- overviews of draft communications
- responses to questions about operationalizing specific policies
- notice of upcoming communications from the Commonwealth to beneficiaries
- topics brought forth by forum participants

Why



Provide an avenue for constructive feedback and solutions to help ensure a successful transition for eligible Medicaid beneficiaries

How



Moving forward, contact KYHealthTeam@KY.gov to be included on future communications regarding these meetings

Stakeholder Advisory Forums

When



March 8th
1:00 PM EST



KY Transportation Cabinet Auditorium
200 Metro St, Frankfort, KY 40601



August 2nd
1:00 PM CST



Green River ADD
300 Gradd Way, Owensboro, KY 42301



April 5th
1:00 PM EST



Kentucky Career Center
600 West Cedar St. Room 111, Louisville, KY 40202



September 6th
1:00 PM EST



KY Transportation Cabinet Auditorium
200 Metro St, Frankfort, KY 40601



May 3rd
1:00 PM EST



KY Transportation Cabinet Auditorium
200 Metro St, Frankfort, KY 40601



October 4th
1:00 PM EST



Center for Rural Dev. Ballroom
2292 US-27 #300, Somerset, KY 42501



June 7th
1:00 PM EST



Covington - Radisson Hotel
668 W 5th Street, Covington, KY 41011



November 1st
1:00 PM EST



KY Transportation Cabinet Auditorium
200 Metro St, Frankfort, KY 40601



July 12th
1:00 PM EST

POSTPONED



Ashland Community & Technical College
LRC Building Room L275, Ashland, KY 41101



December 6th
1:00 PM EST

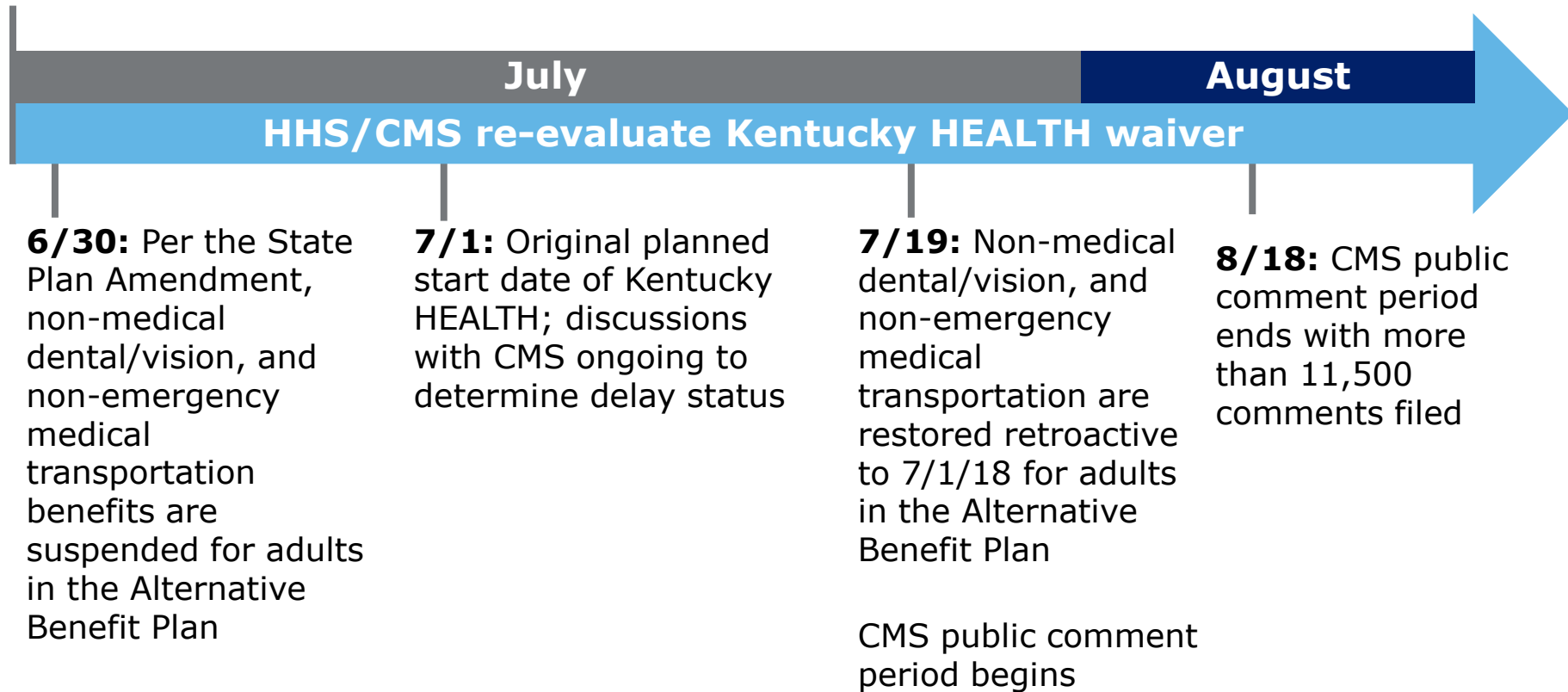


KY Transportation Cabinet Auditorium
200 Metro St, Frankfort, KY 40601

Updates from the Commonwealth

Legal Decision Timeline

6/29: Judge issues legal decision on Kentucky HEALTH, removing original approval and delaying program's start



Frequently Asked Questions about Legal Decision

What does this legal decision mean for beneficiaries?

- As of July 1, 2018, beneficiaries' benefits will continue as they were prior to July 1, 2018 with no changes.

What do beneficiaries need to do?

- Beneficiaries are **not** required to do anything at this time.
- Beneficiaries and their eligible family members can continue to access medically necessary and preventive healthcare services, as well as vision, dental, and non-emergency medical transportation.

What happens if a beneficiary already paid a premium for July?

- If beneficiaries already paid a premium, they can either ask for it to be used to pay the next premium when it becomes due, or they can ask for a refund.
- Beneficiaries should contact their MCO to discuss their options. If beneficiaries ask for a refund, their MCO will send by 30 days after the request.

Do I have a PATH Community Engagement requirement?

- If you received a notice dated July 1, 2018 saying you may have a community engagement requirement, you do **not** need to do anything right now.
- There currently is **no PATH Community Engagement requirement** in any part of the Commonwealth.
- While the program has been temporarily stopped, **you should not ignore the notice**. If/when community engagement goes into effect, we want everyone to be ready for the Kentucky HEALTH program, and to know what you need to do to continue getting Medicaid benefits through Kentucky HEALTH.
- Kentucky HEALTH will send a 90-day notice to beneficiaries before the PATH Community Engagement requirement begins.

Co-payments Update

Do I need to pay a co-payment for health care services/visits?

- As of July 1, 2018, Medicaid asked MCOs to begin collecting co-payments for services.
- Because not all MCOs were collecting co-payments in the same way, Medicaid decided to **temporarily delay co-payment requirements**.
- Contact your MCO for more information regarding any copayments.



July

1. A judge **vacated** the approval of Kentucky HEALTH and asked CMS to address the question of providing medical assistance as they reconsider the waiver.
2. CMS (not the state) re-opened the waiver documents for a **federal comment period** to allow public comments prior to their reconsideration of Kentucky HEALTH.
3. The comment period ended on August 18, 2018. CMS will **consider the comments** as part of the approval decision process.

Next Steps

The state continues to collaborate with federal partners as CMS reconsiders the Kentucky HEALTH program.

Kentucky HEALTH will drive **better health, wellness, education and employment outcomes** for our recipients and create **sustainability** for the Medicaid program.

Misconceptions and Clarifications

The Kentucky HEALTH team identified recurring misconceptions about the upcoming changes based on the public comments submitted to CMS.

Recurring Misconceptions

Misconception	Clarification
<p>If beneficiaries cannot work, they are going to lose their coverage.</p>	<p>Children, pregnant women, former foster youth up to age 26, Medically Frail beneficiaries, refugees, and victims of domestic violence are exempt from the PATH Community Engagement requirement. Beneficiaries may be considered Medically Frail if they have a condition that may prevent them from working.</p>
<p>If a parent loses coverage through Kentucky HEALTH, their child will lose coverage as well.</p>	<p>Children will still be included in the State Benefit Plan, meaning their coverage will not change, even if their parent is part of the Alternative Benefit Plan or loses eligibility.</p>
<p>Caregiving does not count towards the PATH Community Engagement requirement.</p>	<p>Caregiving is an acceptable way to fulfill the PATH Community Engagement requirement; in addition, if someone is designated the primary caregiver of their household, he/she may be exempt from the PATH Community Engagement requirement.</p>

Misconceptions and Clarifications

The Kentucky HEALTH team identified recurring misconceptions about the upcoming changes based on the public comments submitted to CMS.

Recurring Misconceptions

Misconception

The following groups do not have time to complete/report hours for the PATH Community Engagement requirement:

- Full-time students
- Primary caregivers of a dependent
- Those meeting SNAP or TANF (KTAP) work requirements
- Those who work 30+ hours each week



Clarification

Full-time students, primary caregivers, those meeting SNAP or TANF (KTAP) work requirements, and those working 30+ hours each week do **not** have to submit PATH Community Engagement hours each month if they have reported their status to DCBS.

Kentucky HEALTH requires beneficiaries to work to maintain their eligibility.



Some Kentucky HEALTH beneficiaries are required to fulfill the PATH Community Engagement requirement by doing any of the following activities:

- Working
- Self-employment
- Taking GED classes and the GED exam
- Looking for a job
- Training for a new job or skill
- Attending approved classes
- Volunteering
- Taking care of someone who is elderly, disabled or a non-dependent child
- Getting treatment for a substance use disorder

Misconceptions and Clarifications

The Kentucky HEALTH team identified recurring misconceptions about the upcoming changes based on the public comments submitted to CMS.

Recurring Misconceptions

Misconception	Clarification
<p>Beneficiaries with a disability will lose benefits if they cannot work.</p>	<p>Beneficiaries who receive SSDI* are not included in Kentucky HEALTH. Those who receive disability through RSDI may be in Kentucky HEALTH. RSDI recipients in Kentucky HEALTH may be considered Medically Frail, which would mean they are exempt from the PATH Community Engagement requirement.</p>
<p>Kentucky HEALTH proposes the removal of dental and vision benefits.</p>	<p>The Kentucky HEALTH program will continue to cover Medicaid-eligible dental and vision services. Kentucky HEALTH does not propose to eliminate or add new coverage, but rather to transition existing non-medical routine dental and vision services to the My Rewards Account for some beneficiaries.</p>
<p>Kentucky HEALTH locks people out for 6 months if they do not meet all the requirements.</p>	<p>Penalty periods are effective the first of the month following someone's non-compliance with Kentucky HEALTH requirements. Beneficiaries can avoid entering the penalty period by coming into compliance prior to the effective date. In addition, it is possible to end the suspension early.</p>

*SSDI: Social Security Disability Insurance

**RSDI: Retirement, Survivors, and Disability Insurance

Stakeholder Group Impacts from Legal Decision

Stakeholder Group	Implications
Beneficiaries	<ul style="list-style-type: none"> • No change to benefits • Can continue to earn My Rewards – through online courses, accessing preventive care, and completing approved activities
Kentucky HEALTH Project Team	<ul style="list-style-type: none"> • Collaborate with CMS, HHS, and DOJ as they reconsider the Kentucky HEALTH waiver
Managed Care Organizations	<ul style="list-style-type: none"> • Provide process for premium reimbursements
Community partners (e.g., Foundation for a Healthy Kentucky, advocacy groups, CBOs, businesses)	<ul style="list-style-type: none"> • Continue to add PATH Community Engagement activities to Business Connect and Focus and collaborate with Kentucky Career Centers (KCCs)
Department for Community Based Services and Department for Medicaid Services	<ul style="list-style-type: none"> • Answer questions from beneficiaries and prepare for future Kentucky HEALTH roll-out
Workforce Boards/ Kentucky Career Centers	<ul style="list-style-type: none"> • Continue to add PATH Community Engagement activities to Business Connect

Recommended Next Steps for Beneficiaries

Update Information

- Visit benefind.ky.gov to make sure your contact information, especially your email, is up-to-date. Make sure to opt in to receive email updates about Kentucky HEALTH.

Get Ready for PATH Community Engagement

- Find your local Kentucky Career Center by visiting KCC.ky.gov.
- Visit KentuckyHEALTH.ky.gov to plan how you might complete the PATH Community Engagement requirement when it starts in your area.

Earn My Rewards

- Take online courses at CitizenConnect.ky.gov
- Access preventive care
- Complete approved activities
- Use My Rewards dollars earned when Kentucky HEALTH starts

Courses Available on Citizen Connect

Courses on Citizen Connect

- Kentucky HEALTH Overview
- Kentucky HEALTH My Rewards Overview (& Spanish version)
- Kentucky HEALTH Deductible Account (& Spanish version)
- Kentucky HEALTH Cost Sharing (& Spanish version)
- Kentucky HEALTH PATH Community Engagement
- Kentucky HEALTH Substance Abuse Disorder Course
- Kentucky HEALTH Notice of Eligibility course
- Anthem course – Basics of Nutrition (& Spanish version)
- Humana course – Building Your Resume Part 1
- Humana course – Building Your Resume Part 2
- WellCare – Personal Finance 101
- Passport – Wellness for LIFE
- Kentucky HEALTH Overview – Spanish version
- Kentucky HEALTH PATH Community Engagement – Spanish version
- Kentucky HEALTH Substance Abuse Disorder Course
- Kentucky HEALTH Notice of Eligibility course

CitizenConnect.ky.gov

Business Connect and Organizational Examples

How does Business Connect work?

Business Connect is the Commonwealth's online platform for nonprofits and community partners to post opportunities that are available to Kentucky Medicaid recipients.

When an organization posts an opportunity in **Business Connect**...

What is Business Connect?

Business Connect is the **online platform for numerous organizations**, including:

- Nonprofits
- Kentucky Career Centers (KCCs)
- For-profit organizations, such as education institutions

Organizations can use Business Connect to **post a variety of opportunities**, including:

- Workshops and health courses
- Training and education opportunities
- Volunteer opportunities
- Job fairs

...and more!

...it appears in **Citizen Connect**, where Kentuckians can sign up!

What is Citizen Connect?

Citizen Connect is the **online platform for Kentucky Medicaid recipients** looking to:

- Connect to important resources in the community
- Improve their health and well-being
- Participate in a workshop, such as resume building
- Take an education or training course
- Volunteer in the community
- Earn hours towards their PATH Community Engagement requirement

Why should organizations use Business Connect?

Business Connect is an excellent platform for publicizing a variety of opportunities and finding individuals to participate in your organization's events and mission.

1

Connect Kentucky Medicaid recipients to important resources in the community.

2

Increase participation in your organization's events, as well as overall awareness and support of your organization's mission.

3

Encourage community engagement by publicizing opportunities for people to get involved.

4

Increase the health and well-being of individuals in your community by offering educational courses and workshops.

5

Support Kentuckians in gaining professional skills, preparing for interviews, and getting hired or promoted.

Why will Kentucky Medicaid recipients use Citizen Connect?

Once an organization posts an opportunity on Business Connect, it will automatically appear on Citizen Connect, where Kentucky Medicaid recipients look for community engagement opportunities.

01

The individual prefers to find opportunities by searching online, rather than visiting a Kentucky Career Center (KCC) in person.

02

They want to grow their skillset by taking education and training classes.

03

They want to improve their health by participating in workshops about nutrition and healthy behaviors.

04

They're not sure what they're looking for, so they want to find a variety of options on one website.

05

They're looking for opportunities to volunteer or ways to connect in the community.

06

They are searching for activities to meet the PATH Community Engagement requirement, for which all of the above activities will apply once the PATH Community Engagement requirement takes effect.

Available Resources

Kentucky HEALTH Updated Program Information

The Updated Program Information page on the Kentucky HEALTH website includes the most up-to-date information about the legal decision.

Kentucky HEALTH Updated Information Page

Kentucky HEALTH Legal Decision Guides

To visit the Updated Program Information page visit:
KentuckyHEALTH.ky.gov → Resources → Updated Program Information



FYI

Guides to the legal decision are available on the Updated Program Information page of the Kentucky HEALTH website.

The Pulse Newsletter

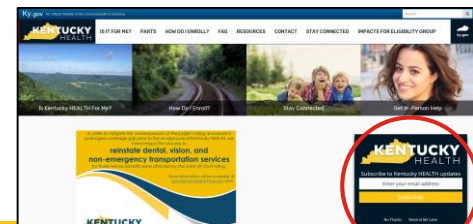
The Kentucky HEALTH team publishes a newsletter for all interested stakeholders to share key project updates and resources.

Hear directly from the Kentucky HEALTH leadership



Find out about upcoming events around the Commonwealth

Find out about recently published resources



FYI

To sign up for the Kentucky HEALTH Pulse, visit our website: **KentuckyHEALTH.ky.gov** and sign up through the subscription box

Follow Kentucky HEALTH on Social Media

The Kentucky HEALTH website and social media pages have been updated regularly with information about how the legal decision has affected beneficiaries, providers, and other stakeholders.



Facebook: **@KentuckyHEALTH**



Twitter: **@KentuckyHEALTH1**

Kentucky HEALTH Overview

Medicaid Populations NOT included in Kentucky HEALTH

Traditional Medicaid (*Aged, Blind & Disabled*)

Age 65 or older

Blind

Disabled

Recipient of Medicare

Resident of nursing facilities or Intermediate Care Facilities for Individuals with Developmental Disabilities

Currently in foster care or receiving subsidized adoption

Participant in Breast or Cervical Cancer Treatment Program

Supplemental Security Insurance recipient

Working disabled adult in Medicaid buy-in

Recipient of Home and Community based Services Waiver

Medicaid Populations INCLUDED in Kentucky HEALTH

Non-Disabled Adults & Children
(*Individuals covered before expansion, pregnant women, children, former foster youth up to age 26 & adult expansion population*)

Income-Eligible Parents/Guardians

- Premiums or Copays
- No Change in Benefits (continue to get vision and dental through MCO)
- Community Engagement required, unless primary caretaker of dependent

Income-Eligible Adults

- Premiums or Copays
- Vision and Dental available through My Rewards Account
- Community Engagement required, unless primary caretaker of dependent

Pregnant Women & Children (Traditional Medicaid and KCHIP)

- No Premiums
- No Change in Benefits
- Community Engagement initiative not required

Medically Frail Adults & Former Foster Youth up to Age 26

- Optional Premiums (for access to My Rewards)
- No Change in Benefits
- Community Engagement initiative not required

Benefit Type by Population

Kentucky HEALTH Alternative Benefit Plan

- Benefits and limitations similar to the Kentucky State Plan
- Non-medical vision/dental services covered through Kentucky HEALTH My Rewards Account

Kentucky HEALTH Medicaid State Plan/CHIP

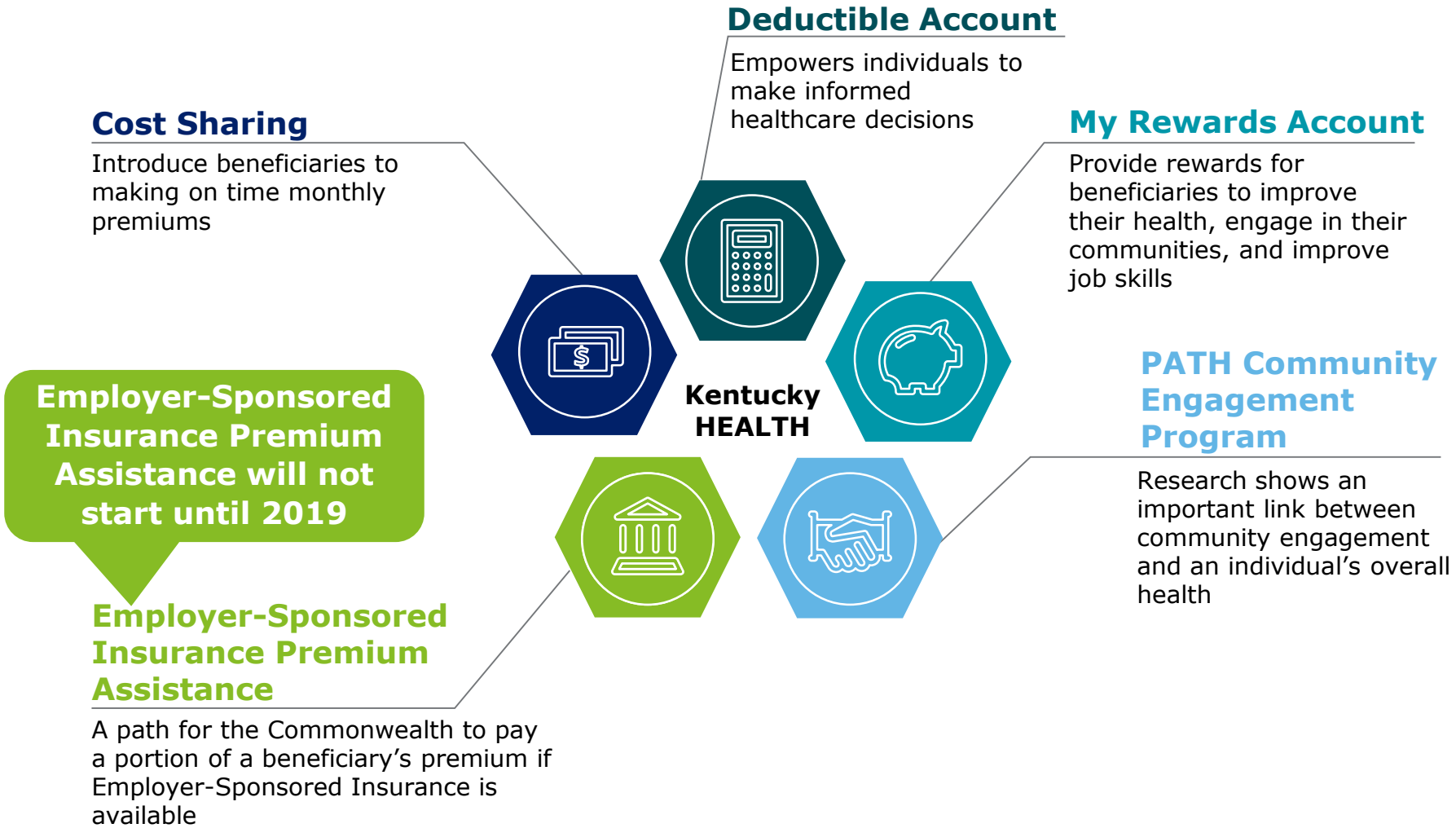
- No change in benefits
- All vision/dental services covered by **MCOs**

Population	Benefit Package
Income-Eligible Adults	● Kentucky HEALTH Alternative Benefit Plan
Medically Frail Adults	● Medicaid State Plan (No change in benefits)
Former Foster Youth to age 26	● Medicaid State Plan (No change in benefits)
Income-Eligible Parents/Guardians & Transitional Medical Assistance (TMA)	● Medicaid State Plan (No change in benefits)
Pregnant Women	● Medicaid State Plan (No change in benefits)
Children	Medicaid State Plan (No change in benefits)

Note: Someone is considered a parent/caretaker while a dependent child is age 18 or younger.

What is the Kentucky HEALTH Program?

Kentucky HEALTH includes several different components, detailed below:



Kentucky HEALTH Eligibility



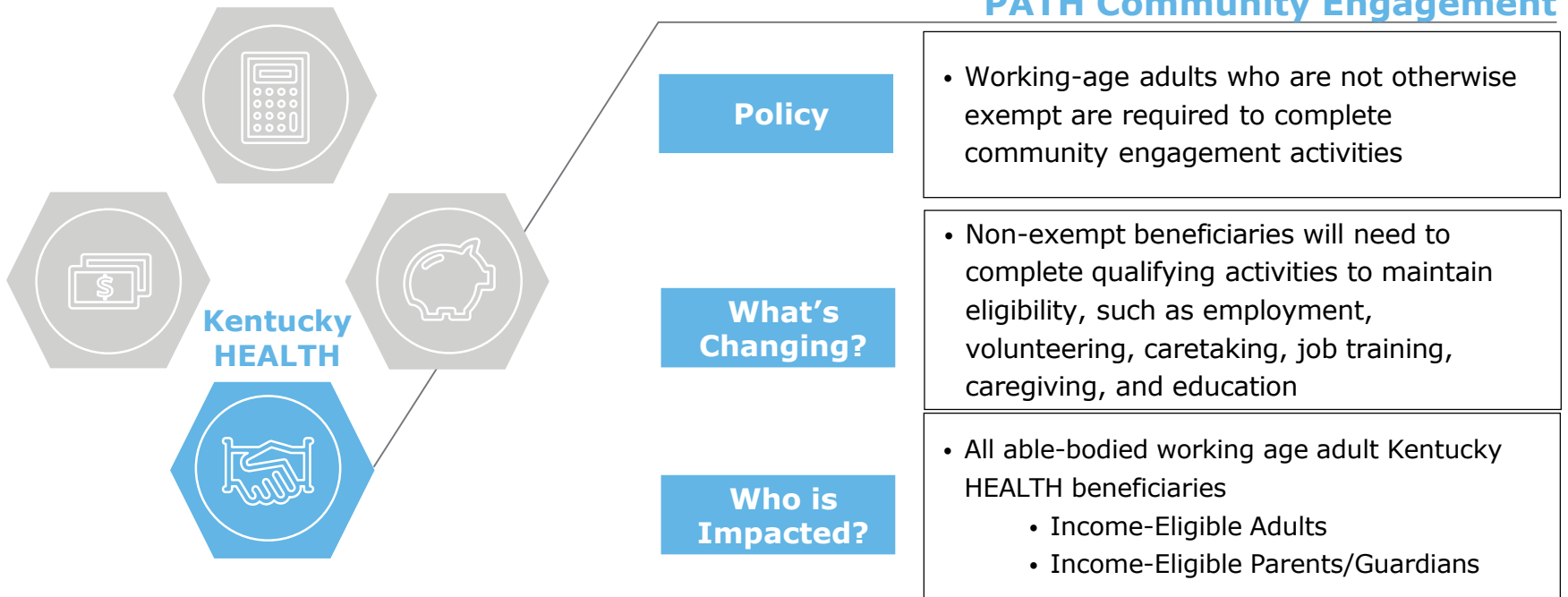
Categories of Eligibility					
Children	Pregnant Women	Former Foster Youth (up to age 26)	Medically Frail	Income-Eligible Caretaker of a Child	Income-Eligible Adults

*If paying premiums

Parts of Kentucky HEALTH	State Plan (benefits)	✓	✓	✓	✓	✓	Alternative Benefit Plan	
	My Rewards Account (MRA)		✓	✓ *	✓ *	✓ *	✓ *	
	Deductible Account		Yes, but inactive until 60 days postpartum	✓	✓	✓	✓	✓
	Cost Sharing: Premiums			Optional (gives access to MRA)	Optional (gives access to MRA)	✓	✓	✓
	PATH Community Engagement					✓	✓	✓
	Premium Assistance (does not start until 2019)		Optional	Optional	Optional	✓	✓	✓

PATH Community Engagement Initiative

Research shows an important link between community engagement and an individual's overall health and well-being. The PATH Community Engagement initiative for Kentucky HEALTH beneficiaries is designed to improve individual health outcomes.



PATH Community Engagement

Policy

- Working-age adults who are not otherwise exempt are required to complete community engagement activities

What's Changing?

- Non-exempt beneficiaries will need to complete qualifying activities to maintain eligibility, such as employment, volunteering, caretaking, job training, caregiving, and education

Who is Impacted?

- All able-bodied working age adult Kentucky HEALTH beneficiaries
 - Income-Eligible Adults
 - Income-Eligible Parents/Guardians

Not Impacted

- Children
- Pregnant Women
- Medically Frail & Former Foster Youth up to Age 26
- Chronically Homeless
- Primary Caregiver of a Dependent
- Full-time Students

Fulfill PATH Requirement

- Full-time Employed
- If a beneficiary is receiving SNAP or KTAP benefits, the SNAP/KTAP work program/applicable exemptions apply instead of PATH Community Engagement

Overview: Creating an Individualized PATH

Partnering to **A**dvance **T**raining and **H**ealth

- Some adults on Medicaid will need to participate in **80 hours of PATH Community Engagement activities each month** to keep their medical benefits.
- Individuals can **choose PATH Community Engagement activities based on their goals and skills.**
- Kentucky HEALTH **is working with Kentucky Career Centers and adult education providers across the Commonwealth.**



Who is Included in PATH Community Engagement?

Included

Working-age adults who:

- Do not have a disability
- Are not the primary caregiver for a child or children
- Are not exempt for another reason

Not Included

- Children
- Pregnant Women
- Medically Frail individuals
- People who are chronically homeless
- People who are the primary caregiver of their child or children
- Full-time students
- Former Foster Youth up to Age 26

Some people are already meeting the PATH Community Engagement requirement, including:

- People who are employed full-time (30 hours per week or more)
- Individuals who are in SNAP or TANF employment & training programs

Ways to participate in PATH Community Engagement

Below are some examples of activities a Kentucky HEALTH recipient could participate in to earn hours towards their PATH Community Engagement requirement.

Qualifying PATH Activities

- **Job Skills Training**
- **Kentucky Career Center (KCC) Skills/Goals Assessment**
- **Job Search Activities**
- **GED Programs**
- **Employment**
- **Apprenticeships/Internships**
- **Community Service/Volunteering**
- **Caregiving Services**
- **Participation in Substance Use Disorder Treatment**

Questions & Answers

Thank you! We'll see you next time.

Date: October 4, 2018

Location: Center for Rural Development Ballroom

2292 US-27 #300 Somerset, KY

Time: 1:00 PM EST